

THE SHENANDOAH

(LOFT SERIES)



THE SHENANDOAH LOG HOME PACKAGE INCLUDES:

• LOG WALL SYSTEM

- Pre-cut wall logs
- 12" lags and saturated foam gasket
- 1/2" log wall rods with springs
- Assembly prints
- Base board trim and log siding for subfloor band boards

• WINDOW & DOOR FRAMING SYSTEM

- Pre-cut, window and door jambs
- Interior and exterior 1" trim lumber

• LOFT FRAMING SYSTEM

- Pre-cut loft joists
- Pre-cut girder beams
- 6" x 6" support posts with adjusters
- Installation hardware

• ROOF FRAMING SYSTEM

- Pre-cut rafters and ridge beams
- Support posts and rafter collar ties
- Pre-cut dormer headers, sills, and support posts
- Log siding for gable ends and dormers

• PORCH FRAMING SYSTEM

- Pre-cut plates and rafters
- 6" x 6" pressure treated foundation, support posts and sills
- Pre-cut pressure treated 2" x 8" joists and 5/4" decking

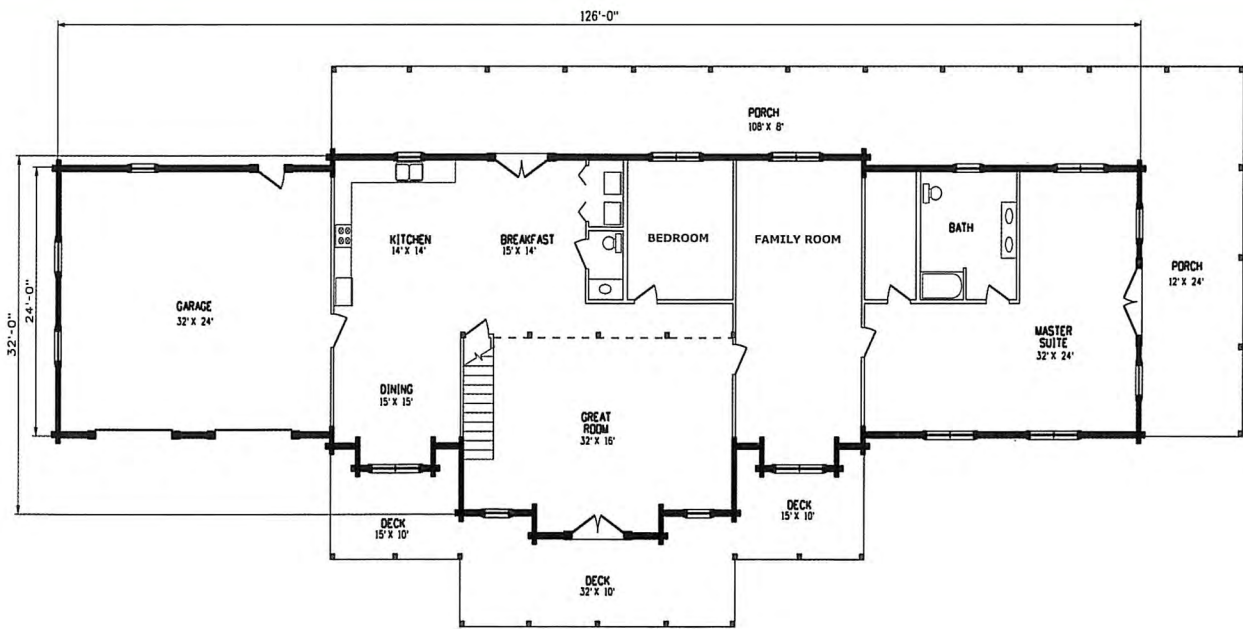
• TRIM LUMBER

- Surfaced trim lumber for gable ends, dormers, fascia, and porch eaves

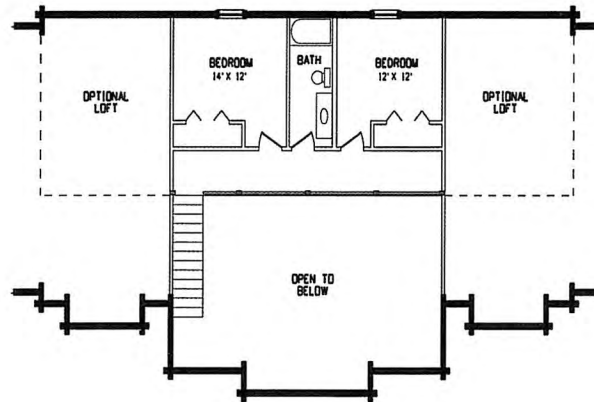
- **OPTIONS:** 2" x 6" or 2" x 8" T & G flooring and sheeting, and rigid insulation



CATCH CABIN FEVER!



FIRST FLOOR PLAN



SECOND FLOOR PLAN

THE SHENANDOAH

- 3187 Sq. Ft. Living Area
- 24' x 32' Log Garage 768 Sq. Ft.
- 34' x 94' 2675 Sq. Ft. First Floor
- 16' x 32' Loft 512 Sq. Ft.
- 12' x 32' and 8' x 94' Porches
- 10' x 32' Deck
- 10' x 15' Decks

