

# THE

# ALPINE VISTA

(LOFT SERIES)



## THE ALPINE VISTA LOG HOME PACKAGE INCLUDES:

### • LOG WALL SYSTEM

- Pre-cut wall logs
- 12" lags and saturated foam gasket
- 1/2" log wall rods with springs
- Assembly prints
- Base board trim and log siding for subfloor band boards

### • WINDOW & DOOR FRAMING SYSTEM

- Pre-cut, window and door jambs
- Interior and exterior 1" trim lumber

### • LOFT FRAMING SYSTEM

- Pre-cut loft joists
- Pre-cut girder beams
- 6" x 6" support posts with adjusters
- Installation hardware

### • ROOF FRAMING SYSTEM

- Pre-cut rafters and ridge beams
- Support posts and rafter collar ties
- Pre-cut dormer headers, sills, and support posts
- Log siding for gable ends and dormers

### • PORCH FRAMING SYSTEM

- Pre-cut plates and rafters
- 6" x 6" pressure treated foundation, support posts and sills
- Pre-cut pressure treated 2" x 8" joists and 5/4" decking

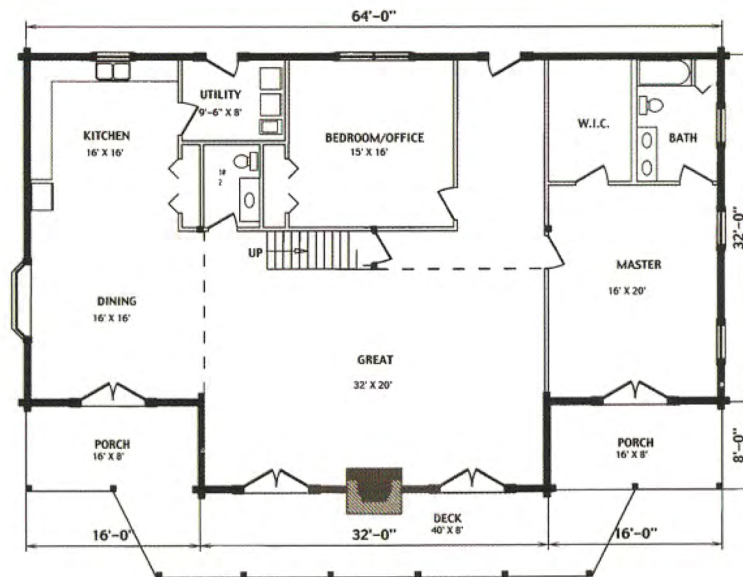
### • TRIM LUMBER

- Surfaced trim lumber for gable ends, dormers, fascia, and porch eaves

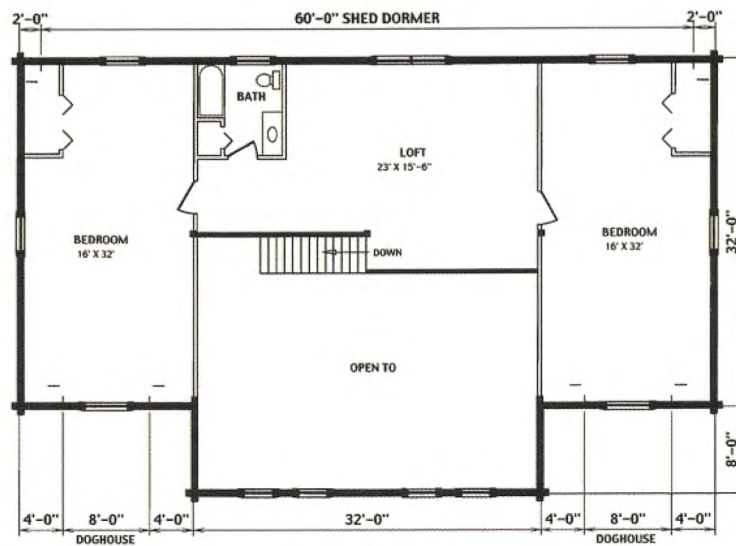
- **OPTIONS:** 2" x 6" or 2" x 8" T & G flooring and sheeting, and rigid insulation



# CATCH CABIN FEVER!



FIRST FLOOR PLAN



SECOND FLOOR PLAN

# THE ALPINE VISTA

- 40' x 64' "T"
- 3840 Sq. Ft. Living Area
- 2304 Sq. Ft. First Floor / 1536 Sq. Ft. Second Floor
- 2 – 8' x 16' Covered Porches
- 8' x 40' Deck
- 8' x 64' Rear Porch (not shown)

